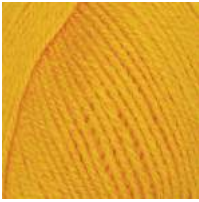




# Crochet along

## YARN USED:

Robin DK



136 Mustard

## Base Construction

### WHAT YOU NEED

- 3.00mm crochet hook.
- A1 sheet of Foam Board.
- Cardboard.
- 1 x 250g bag of Polyester craft filling.

## ABBREVIATIONS

**sc:** double crochet

## BASE

Using **B2** as a template draw three circles onto foam board (or thick card) and cut out. Using a sharp pair of scissors or a knife make a hole through the centre of two of the cut outs.

Make Cardboard support tube and sellotape very securley to the middle of **FB3**.

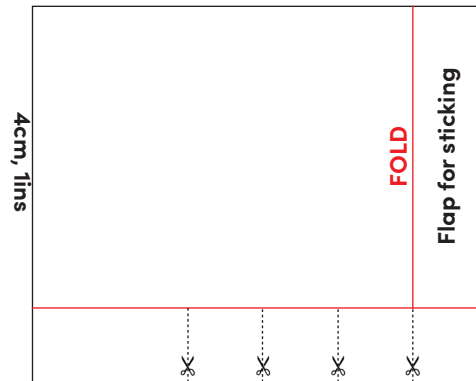
Sc **B3** to one edge of **B2** using 3.00mm hook and Mustard.

Place **FB3** on top of **B2** so **B3** goes around the edge. The reverse side of the crochet circle will be on the inside face up to the board. Sc **B1** to the other edge of **B3**. Once halfway round insert **FB1**, lining the hole up with the top of the cardboard tube. Make sure not to bend the cardboard tube. Stuff the inside firmly. Insert a pen through the middle of **B1**, **FB1** and into the cardboard tube to make sure when your stuffing the tube it doesn't get moved out of position. Once the base is stuffed dc the remainder together. Fasten off and weave in ends.

## Support Tube

### Tube Template

5cm, 1ins

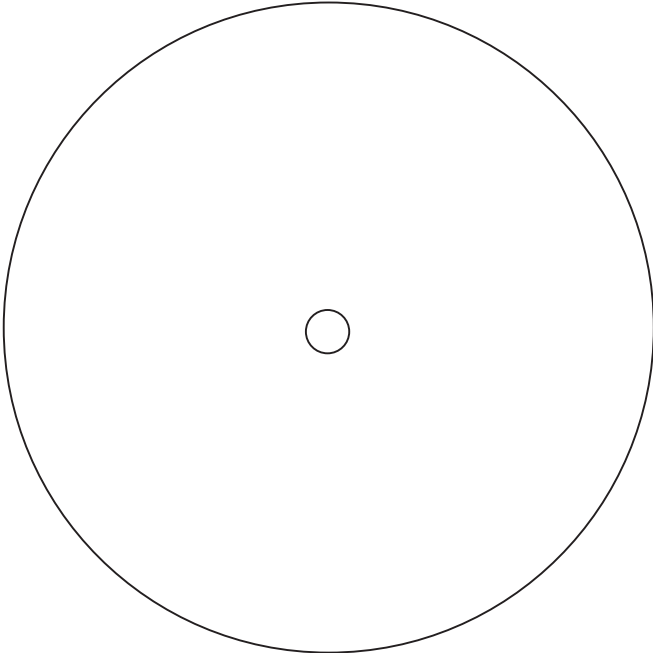


### How to make cardboard support tube.

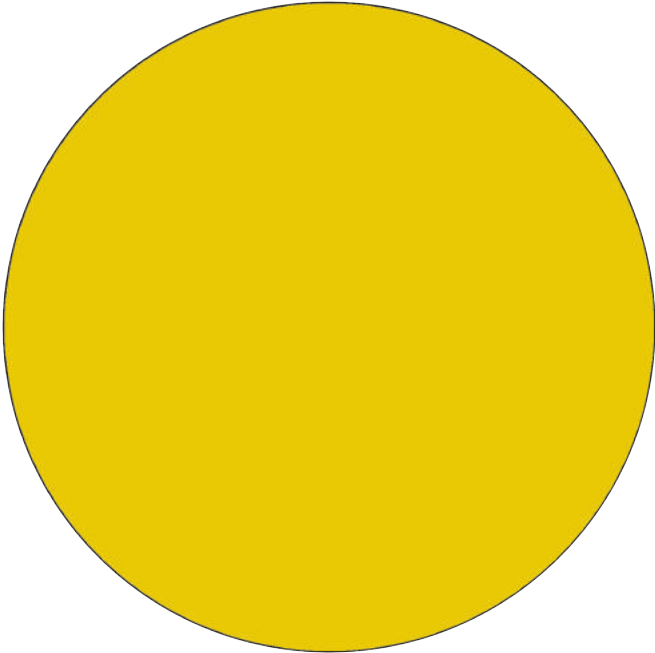
Draw template onto cereal box and cut and fold where indicated. Fold the bottom flaps out. Cellotape the tube together securley, making sure large flap is on the inside of the tube. Cellotape the small flaps to the bottom of the foam board securley making sure that they are as flat to the base as possible.

# Crochet components for Carousel Base

**Base Top (B1)**



**Base Underneath (B2)**



**Base Gusset (B3)**

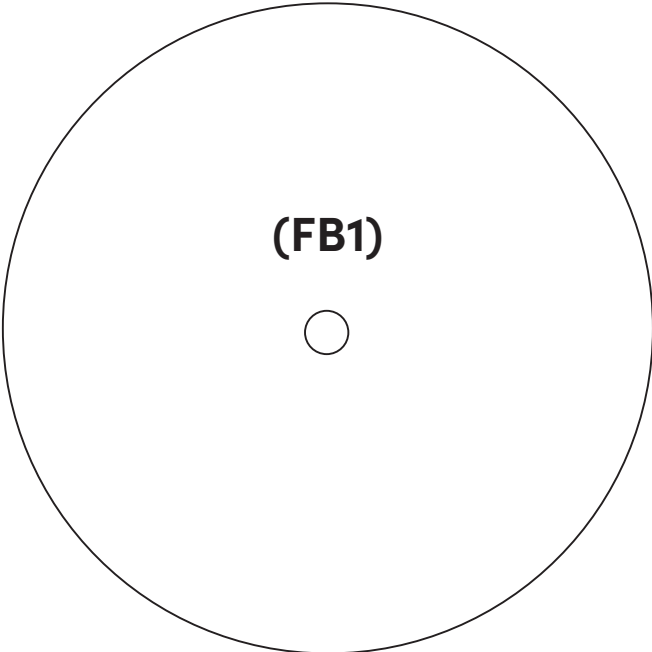


**Dowl Cover (D1)**

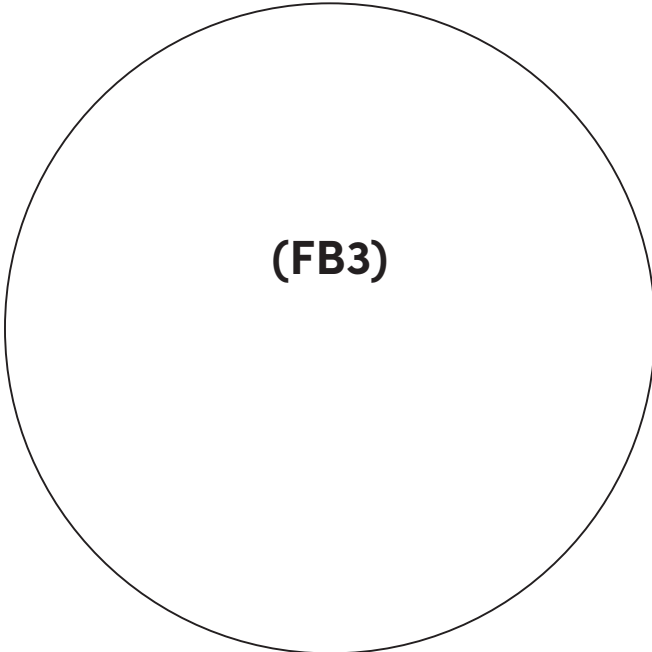


**Two Foam Board Circles.  
Cut to the same diameter of finished Crochet circle.  
One Board has a hole in the centre.**

**(FB1)**

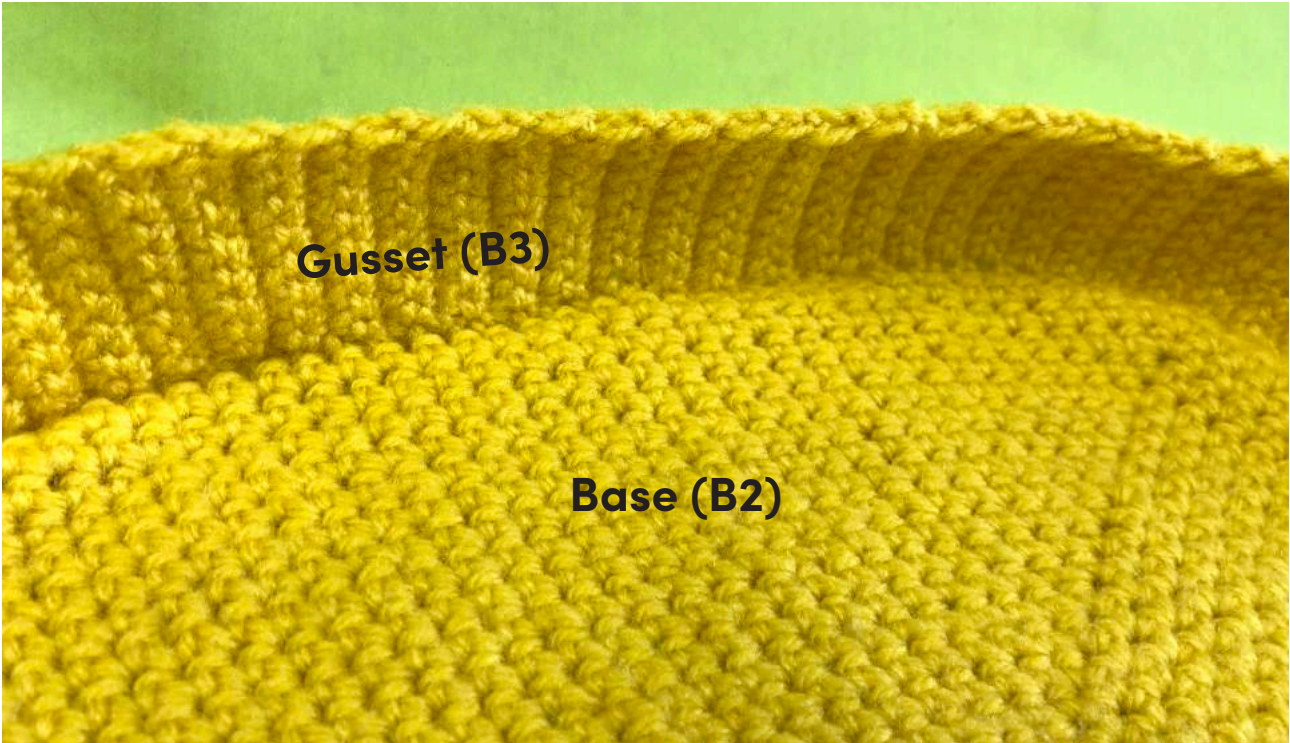


**(FB3)**

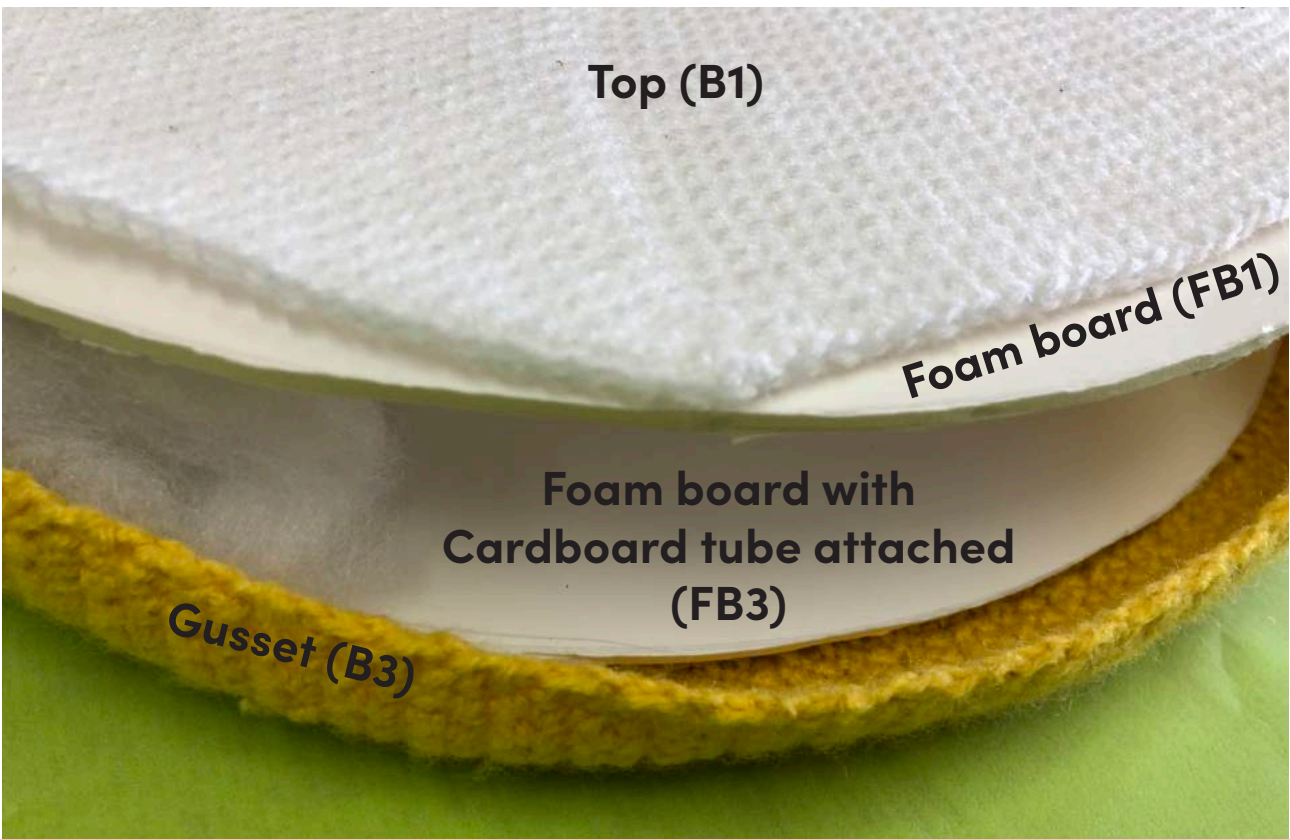


**\*\*Images are a guide only to help describe constuction and are not to scale apart from the cardboard tube template.**

# Crochet along

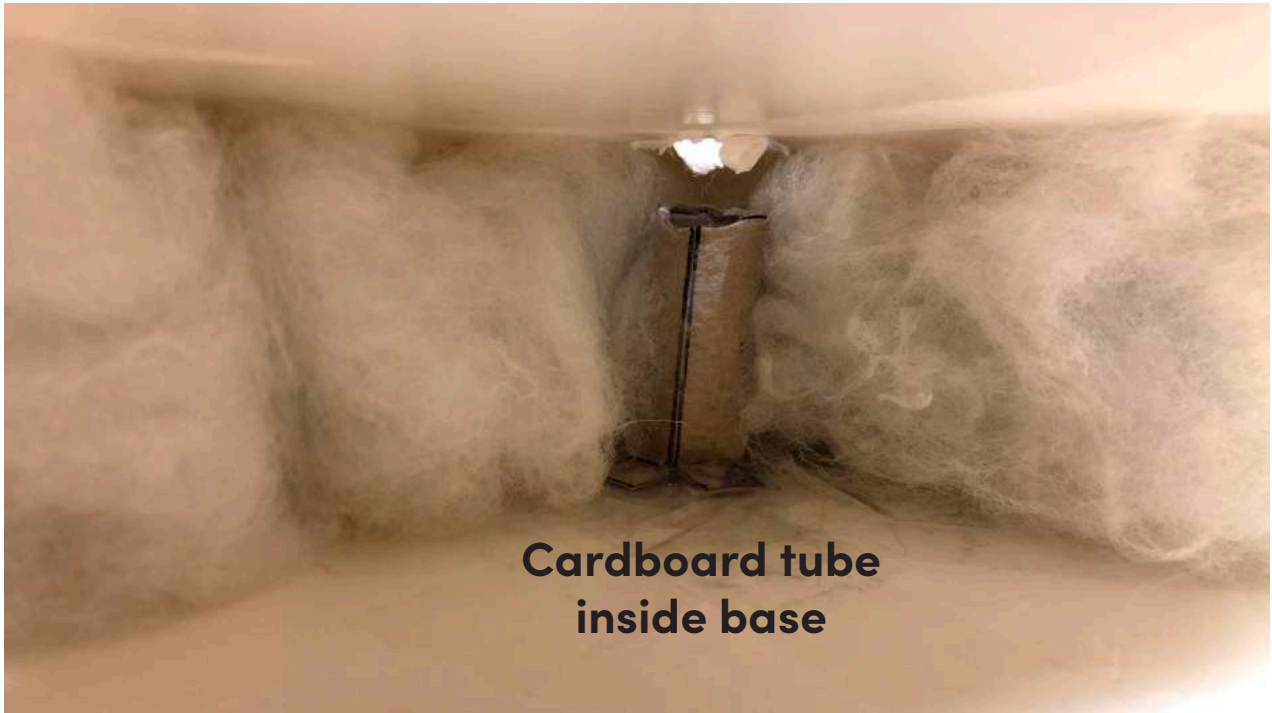


**Crochet the gusset to base wrong side facing up.**

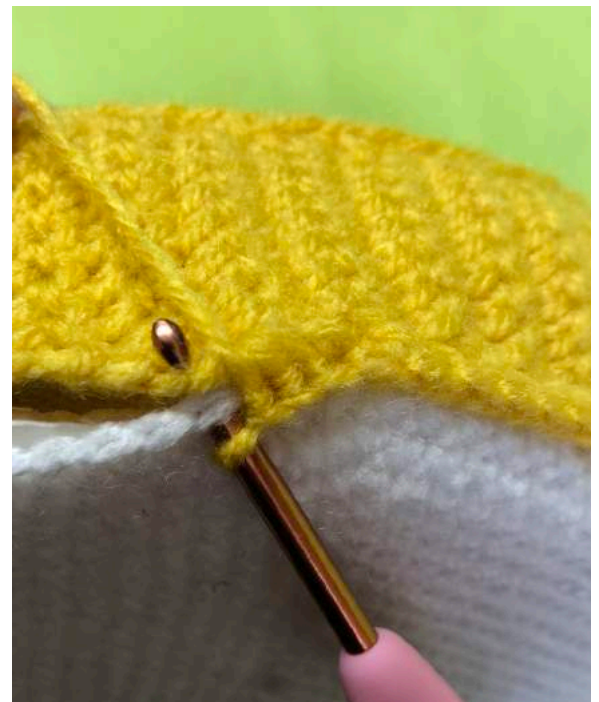


# Crochet along

Week 4



Cardboard tube  
inside base



**Crochet the base and the top pieces together, sandwiching the foam boards and stuffing inbetween to create a stable base**

# Crochet along

Week 4



**Finished base**



**Robin**